

**FOR IMMEDIATE RELEASE**

**No. 3489**

*Media Inquiries*

Public Relations Division  
Mitsubishi Electric Corporation

[prd.gnews@nk.MitsubishiElectric.co.jp](mailto:prd.gnews@nk.MitsubishiElectric.co.jp)  
[www.MitsubishiElectric.com/news/](http://www.MitsubishiElectric.com/news/)

## **Mitsubishi Electric Announces New Management Structure Effective April 1 and Changes in Representative Executive Officers, Executive Officers and Executive Officers(Associate)**

**TOKYO, February 17, 2022** – [Mitsubishi Electric Corporation](https://www.mitsubishielectric.com) (TOKYO: 6503) announces that a new management structure will be adopted and the executive officer structure and division of duties will be changed effective April 1 2022, pursuant to a resolution passed during a regular meeting of the Board of Directors held on February 17, 2022. The Company also announces Executive Officers (Associate) to be newly appointed on the same date.

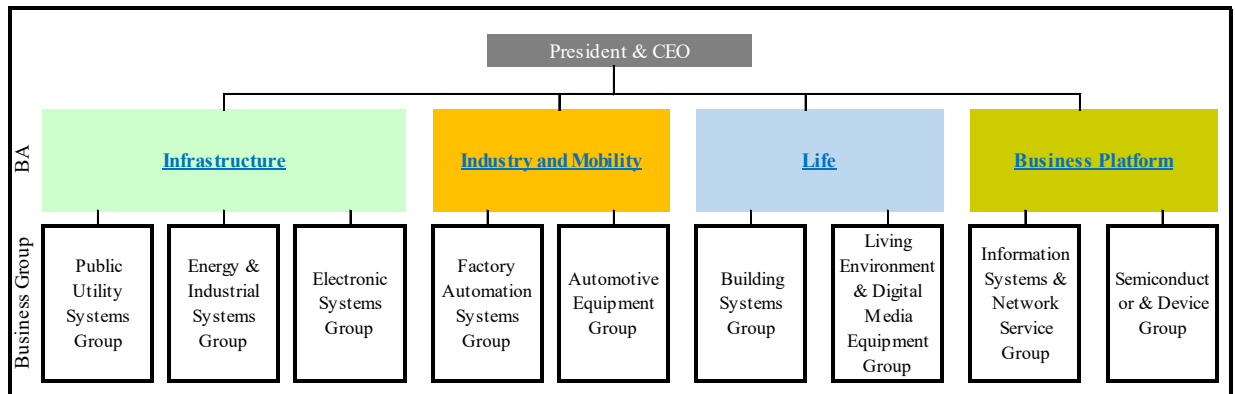
### **1. Management Structure**

In order to accelerate the Company's corporate strategy to provide Integrated Solutions to address social challenges in the four fields of Life, Industry, Infrastructure and Mobility, uniting all the capabilities inside and outside of the Group, as well as to develop and drive business strategies with company-wide and medium- to long-term perspectives by maintaining a bird's-eye view on a wide range of business domains, from FY2022, the Company will assign new Business Area (BA) Owner responsibilities to Executive Officers, who will oversee multiple interconnected business groups with a social challenge as the focal point.

BA Owners will, from a company-wide perspective, facilitate the acceleration of M&As and business restructuring in business groups within their purview. Moreover, they will drive the creation of new businesses, enhancement of technological and business fields, and strategic shifting of resources with a bird's-eye view of their respective BA. Furthermore, the Company will drive dynamic and speedy management reforms that break free from the conventional business group structure, such as BA Owners jointly creating synergies across the boundaries of BAs with a company-wide perspective.

In corporate divisions, the Company will expand the chief officer structure to clarify their roles by primary function. Swiftly grasping various changes in the environment surrounding the business, such as digital transformation (DX), carbon neutrality and geopolitical risks, they will seek to develop company-wide strategies, such as sustainability strategies, to be implemented across the boundaries of BAs to create both social and economic values, and to enhance their functions to support each BA.

The relationship between business areas and business groups in FY2022 will be as follows:



[Infrastructure BA]

Infrastructure BA will help building more resilient and safe social infrastructure systems by proposing a wide range of solutions that leverage digital engineering technologies the Company has accumulated.

[Industry and Mobility BA]

Industry and Mobility BA will help creating a smart industrial society and mobility society amid a rapidly changing business environment with the advent of industry 4.0 and CASE, by reciprocally leveraging and developing the technologies accumulated by the two business groups under its umbrella, such as drive control technology and sensor technology.

[Life BA]

Life BA will help creating an enriched sustainable living by offering comfortable and convenient spaces for a wide range of communities from personal to public, unconstrained by individual business domains such as elevators and HVAC systems.

[Business Platform BA]

Business Platform BA will offer highly efficient and reliable semiconductor devices as well as secure and highly scalable information systems throughout society to help solve diversifying social challenges while supporting the development of the three abovementioned BAs.

## **2. Changes of Executive Officers (effective April 1, 2022)**

Name	Assignments and positions (as of April 1, 2022)	Assignments and positions (as of February 17, 2022)
Kei Uruma	Representative Executive Officer, President & CEO	Representative Executive Officer, President & CEO
Tadashi Matsumoto	Representative Executive Officer, Senior Vice President, Life Business Area(*) Owner (Group President, Building Systems, Representative Director and President, Mitsubishi Electric Building Solutions Corporation), In charge of Export Control	Representative Executive Officer, Senior Vice President, Group President, Building Systems, In charge of Export Control
Yoshihisa Hara	Executive Officer, Group President, Electronic Systems	Executive Officer, Group President, Electronic Systems
Atsuhiko Yabu	Executive Officer, Group President, Automotive Equipment	Executive Officer, Group President, Automotive Equipment
Satoshi Kusakabe	Executive Officer, CRO (In charge of Legal Affairs & Compliance, Risk Management, Economic Security and Export Control)	Executive Officer, CRO (In charge of Risk Management, Economic Security and Export Control), In charge of Government & External Relations and Intellectual Property
Yoji Saito	Executive Officer, CMPO (In charge of Purchasing), CCO (Vice President, Corporate Communication, In charge of Government & External Relations)	Executive Officer, Vice President, Corporate Global Strategic Planning & Marketing
Noriyuki Takazawa	Executive Officer, Infrastructure Business Area(*) Owner (Group President, Energy & Industrial Systems)	Executive Officer, Group President, Energy & Industrial Systems
So Suzuki	Executive Officer, Group President, Living Environment & Digital Media Equipment	Executive Officer, Group President, Living Environment & Digital Media Equipment
Eiichiro Mitani	Executive Officer, Business Platform Business Area(*) Owner (Group President, Information Systems & Network Service), CIO (In charge of Information Security and IT, Vice President, Corporate Process & Operation Reengineering)	Executive Officer, CIO (In charge of IT), Chief Operation DX Officer (Vice President, Corporate Process & Operation Reengineering)
Shozui Takeno	Executive Officer, Vice President, Corporate Total Productivity Management & Environmental Programs	Executive Officer, CISO (In charge of Information Security), Vice President, Corporate Total Productivity Management & Environmental Programs, CQO (Vice President, Corporate Quality Assurance Reengineering)

Kunihiko Kaga	Executive Officer, In charge of Auditing, CSO (In charge of Corporate Strategic Planning and Operations of Associated Companies), CTO (In charge of Technology Strategies(*))	Executive Officer, CSO (In charge of Corporate Strategic Planning and Operations of Associated Companies)
Katsuya Furuta	Executive Officer, CMO (In charge of Global Marketing(*)), Vice President, Corporate Marketing)	Executive Officer, Vice President, Corporate Marketing
Kuniaki Masuda	Executive Officer, CFO (In charge of Accounting and Finance), CHRO (In charge of General Affairs and Human Resources)	Executive Officer, In charge of General Affairs and Human Resources
Tomonori Sato	Executive Officer, In charge of Intellectual Property, Vice President, Corporate Research and Development	Executive Officer, CTO (Vice President, Corporate Research and Development)
Yoshikazu Nakai	Executive Officer, CPO (In charge of Manufacturing(*)), CQO (Vice President, Corporate Quality Assurance Reengineering)	-
Satoshi Takeda	Executive Officer, Industry and Mobility Business Area(*) Owner (Group President, Factory Automation Systems)	Senior General Manager, Planning & Administration Dept. of Factory Automation Systems Group
Hiroshi Sakakibara	Executive Officer, CDO (Vice President, Corporate Business Innovation)	-

\*Details of areas of responsibility

Technology Strategies:	Intellectual Property, Corporate Research and Development
Global Marketing:	Overseas and Domestic Marketing
Manufacturing:	Corporate Quality Assurance Reengineering, Total Productivity Management & Environmental Programs
Infrastructure Business Area:	Public Utility Systems, Energy & Industrial Systems, Electronic Systems
Industry and Mobility Business Area:	Factory Automation Systems, Automotive Equipment
Life Business Area:	Building Systems, Living Environment & Digital Media Equipment
Business Platform Business Area:	Information Systems & Network Service, Semiconductor & Device

\*Details of Chief Officer

CEO:	Chief Executive Officer
CRO:	Chief Risk Management Officer
CMPO:	Chief Material Procurement Officer
CCO:	Chief Communication Officer
CIO:	Chief Information Officer
CISO:	Chief Information Security Officer
CQO:	Chief Quality Officer
CSO:	Chief Strategy Officer
CTO:	Chief Technology Officer
CMO:	Chief Marketing Officer
CFO:	Chief Financial Officer
CHRO:	Chief Human Resources Officer
CPO:	Chief Productivity Officer
CDO:	Chief Digital Officer

### **3. Retiring Executive Officers (effective March 31, 2022)**

Representative Executive Officer, Senior Vice President	Jun Nagasawa
Senior Vice President	Satoshi Matsushita
Senior Vice President	Yoshikazu Miyata
Senior Vice President	Koichi Orito
Executive Officer	Tadashi Kawagoishi
Executive Officer	Juichi Shikata
Executive Officer	Hideki Fukushima
Executive Officer	Yuzuru Saito

### **4. Career Summary of Newly Appointed Executive Officers (as of February 17, 2022)**

Yoshikazu Nakai (Date of Birth: September 5, 1961) 60 years old	March 1984 April 1984 April 2014 April 2016 December 2018 November 2020	Graduated from Dept. of Electronic Engineering, the University of Electro-Communications Joined Nissan Motor Co., Ltd. Vice President, Total Customer Satisfaction Function, Planning and Administration Department Corporate Vice President, Total Customer Satisfaction Function, Production/Field Quality, Quality Audit Executive Vice President, Nori Corporation General Manager, Global Quality Control Department of Automotive Motor & Electronic Control Business Group, NIDEC CORPORATION
Satoshi Takeda (Date of Birth: March 10, 1967) 54 years old	March 1989 April 1989 January 2018 April 2020 April 2021	Graduated from Faculty of Economics, Keio University Joined the Company Deputy Senior General Manager, Nagoya Works Senior General Manager, Overseas Marketing Div. of Factory Automation Systems Group Senior General Manager, Planning & Administration Dept. of Factory Automation Systems Group
Hiroshi Sakakibara (Date of Birth: January 1, 1971) 51 years old	June 1994 July 1994 November 1996 August 2004 September 2012 August 2015 January 2018 December 2018 February 2022	Graduated from Faculty of Law, the University of Tokyo Joined the Boston Consulting Group Joined Apple Japan, Inc. Joined Microsoft Corporation (United States) Transferred to Microsoft Japan Co., Ltd. Joined Benesse Holdings, Inc. Chief Digital Officer (CDO) Managing Officer, Connected Solutions Company, Chief Digital Officer (CDO), Chief Information Officer (CIO), Panasonic Corporation Joined the Company

### **5. Executive Officers(Associate) (effective April 1, 2022)**

Based on the company-wide management policy, the Company will newly appoint Executive Officers (Associate) who will make decisions on overall management and execute business in relation to groups / business groups / corporate divisions within their purview. The appointments are as follows:

Name	Assignments and positions (as of April 1, 2022)	Positions (as of February 17, 2022)
Noriyuki Shimizu	Executive Officer, Group President, Global Strategic Planning & Marketing	Group Senior Vice President, Factory Automation Systems, Senior General Manager, Industrial Automation Marketing Div. of Factory Automation Systems Group
Yasumichi Tazunoki	Executive Officer, Senior General Manager, Corporate Strategic Planning Div.	Deputy Senior General Manager, Corporate Strategic Planning Div.
Shigeki Kawaji	Executive Officer, Senior General Manager, Corporate Purchasing Div.	Senior General Manager, Overseas Marketing Div. of Public Utility Systems Group
Kenichiro Fujimoto	Executive Officer, Overseeing Accounting and Finance, Senior General Manager, Corporate Accounting Div.	Senior General Manager, Planning & Administration Dept. of Living Environment & Digital Media Equipment Group
Masayoshi Takemi	Executive Officer, Group President, Semiconductor & Device	Senior General Manager, High Frequency & Optical Device Works
Hideto Negoro	Executive Officer, Group President, Public Utility Systems	Senior General Manager, Public-Use Systems Marketing Div. of Public Utility Systems Group
Yasunari Abe	Executive Officer, Senior General Manager, Corporate Human Resources Div.	Senior General Manager, Public Relations Div. of Corporate Communication Group

### **6. Career Summary of Executive Officers(Associate) (as of February 17, 2022)**

Noriyuki Shimizu (Date of Birth: July 8, 1962) 59 years old	March 1986	Graduated from Faculty of Economics, Seikei University
	April 1986	Joined the Company
	April 2015	Senior General Manager, Overseas Marketing Div. of Factory Automation Systems Group
	April 2020	Senior General Manager, Industrial Automation Marketing Div. of Factory Automation Systems Group
	April 2021	Group Senior Vice President, Factory Automation Systems, Senior General Manager, Industrial Automation Marketing Div. of Factory Automation Systems Group
Yasumichi Tazunoki (Date of Birth: September 9, 1963) 58 years old	March 1987	Graduated from Faculty of Letters, the University of Tokyo
	April 1987	Joined the Company
	April 2015	Senior General Manager, Planning & Administration Dept. of Living Environment & Digital Media Equipment Group
	April 2020	Senior General Manager, Air-Conditioning & Refrigeration Systems Div. of Living Environment & Digital Media Equipment Group
	April 2021	Deputy Senior General Manager, Corporate Strategic Planning Div.

Shigeki Kawaji (Date of Birth: September 19, 1962) 59 years old	March 1985 April 1985 April 2019	Graduated from School of Education, Waseda University Joined the Company Senior General Manager, Overseas Marketing Div. of Public Utility Systems Group
Kenichiro Fujimoto (Date of Birth: September 4, 1964) 57 years old	March 1988 April 1988 April 2016 April 2018 April 2020	Graduated from Faculty of Law, Kyoto University Joined the Company Deputy Senior General Manager, Associated Companies Div. Senior General Manager, Planning & Administration Div. of Public Utility Systems Group Senior General Manager, Planning & Administration Dept. of Living Environment & Digital Media Equipment Group
Masayoshi Takemi (Date of Birth: October 4, 1965) 56 years old	March 1991 April 1991 April 2016 April 2018 April 2019	Completed Master's course in Electrical Engineering, Graduate School of Engineering, Kyoto University Joined the Company Deputy Senior General Manager, Planning & Administration Div. of Semiconductor & Device Group Deputy Senior General Manager, High Frequency & Optical Device Works Senior General Manager, High Frequency & Optical Device Works
Hideto Negoro (Date of Birth: September 30, 1966) 55 years old	March 1991 April 1991 April 2018 April 2021	Completed Master's course in Information Engineering, Graduate School of Engineering, Shinshu University Joined the Company Senior General Manager, Itami Works Senior General Manager, Public-Use Systems Marketing Div. of Public Utility Systems Group
Yasunari Abe (Date of Birth: November 12, 1966) 55 years old	March 1989 April 1989 April 2018 April 2020	Graduated from Faculty of Education, Tohoku University Joined the Company Deputy Senior General Manager, Corporate Human Resources Div. Senior General Manager, Public Relations Div. of Corporate Communication Group

###

### **About Mitsubishi Electric Corporation**

With 100 years of experience in providing reliable, high-quality products, Mitsubishi Electric Corporation (TOKYO: 6503) is a recognized world leader in the manufacture, marketing and sales of electrical and electronic equipment used in information processing and communications, space development and satellite communications, consumer electronics, industrial technology, energy, transportation and building equipment. Mitsubishi Electric enriches society with technology in the spirit of its "Changes for the Better." The company recorded a revenue of 4,191.4 billion yen (U.S.\$ 37.8 billion\*) in the fiscal year ended March 31, 2021. For more information, please visit [www.MitsubishiElectric.com](http://www.MitsubishiElectric.com)

\*U.S. dollar amounts are translated from yen at the rate of ¥111=U.S.\$1, the approximate rate on the Tokyo Foreign Exchange Market on March 31, 2021